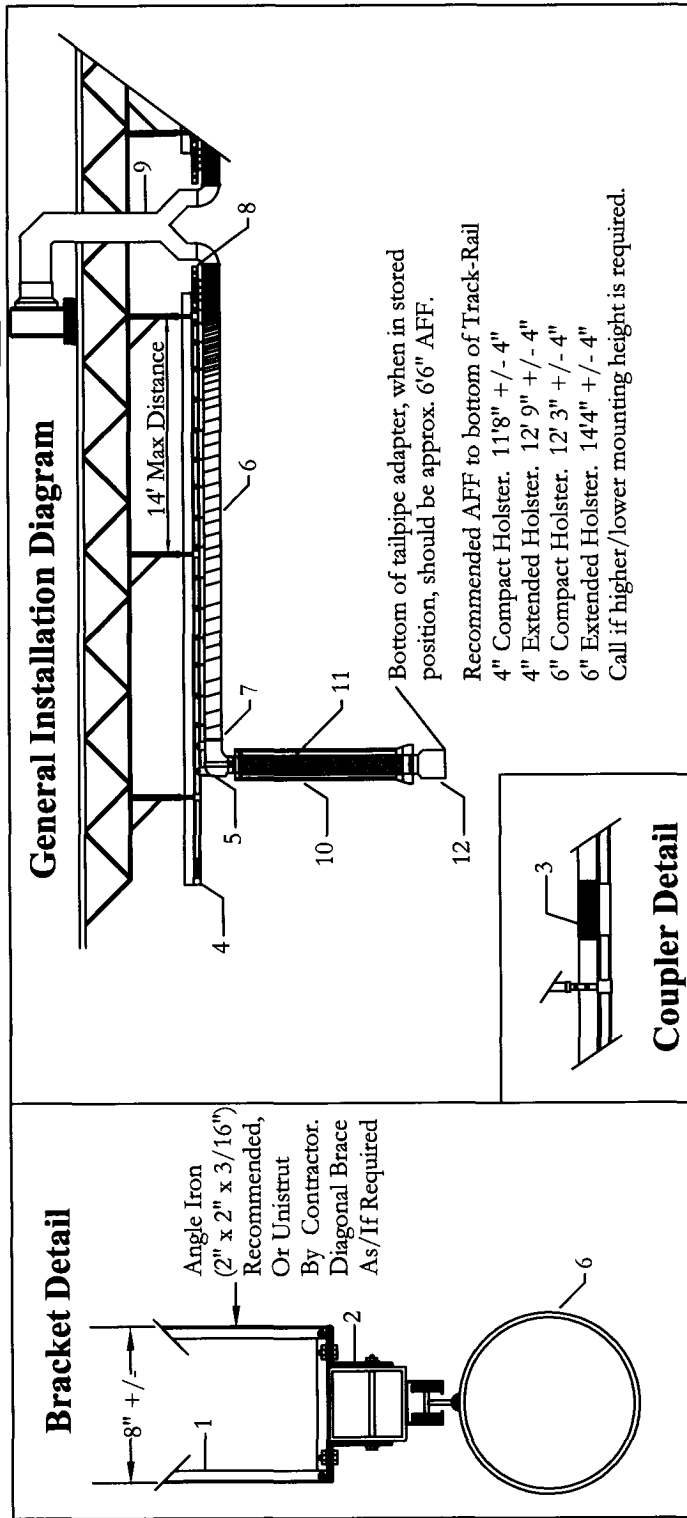


INSTALLATION - TRACK-RAIL

FOR ASCENT SYSTEMS PART #: A-TR-



A: Using the dimensions indicated above, install the support brackets (1) at each end of the track-rail.

B: To ensure the brackets are the correct height, stretch a line between the end brackets, and mount intermediate brackets to that line.

C: Once all brackets are installed, add stabilizing cross braces as required.

D: Bolt the Track-Rails (2) to the suspension brackets, using the included hardware.

E: On sections over 20', use supplied couplers (3) to fit Track-Rail sections together, using included hardware.

F: At the end of each Track-Rail (2) Length, install the End Stop with Spring (4).

G: 1) Install trolley (5) into back end of Track-Rail (2);
2) Feed Horizontal Hose (6) on Track-Rail (2);
3) Connect Horizontal Hose (6) & Trolley (5) with hose clamp (7).

I: Using provided rubber strapping and hardware, mount Hose Holster (10) to Trolley (5).

J: With assistance (recommended), feed Hose Holster (11) into the Hose Holster (10), and use hose clamp to secure Hose Holster (11) to Trolley (5). Feed remaining hose into Hose Holster and set Tailpipe Adapter (12) into notches of Hose Holster (10).